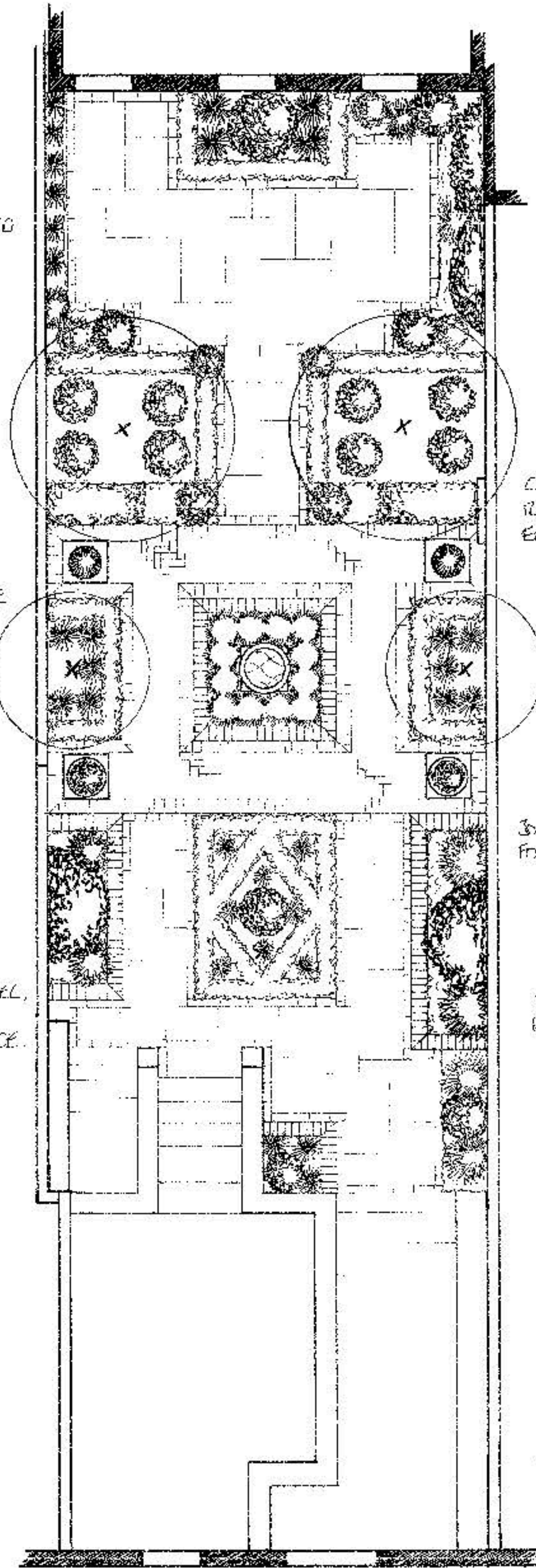


THE EXISTING PROTIPIA COULD BE MOVED SLIGHTLY TO PROVIDE A STRONG FOCAL POINT AT THE END OF THE GARDEN. THIS WILL DRAW YOUR EYE THROUGH THE TARKS, TO THE END OF THE GARDEN WHICH WILL BE FRAMED BY THE REST OF THE GARDEN.

STONE PAVING PROVIDES ROOM FOR SEATING AND SELECTED DRESSINGS TO CREATE A USEABLE AREA. THE TREES WOULD BE SELECTED TO GIVE PRIVACY FROM HIGH WINDOWS OF THE NEIGHBOURING BUILDINGS.

THE SURFACE CHANGES TO BRICK HERRINGBONE AND ALLOWS THE FULL WIDTH OF THE GARDEN TO BE USED. THIS HELPS THE GARDEN TO LOOK WIDER, AND ALLOWS SPACE FOR STATUARY OR EXISTING URNS ON PLINTHS.

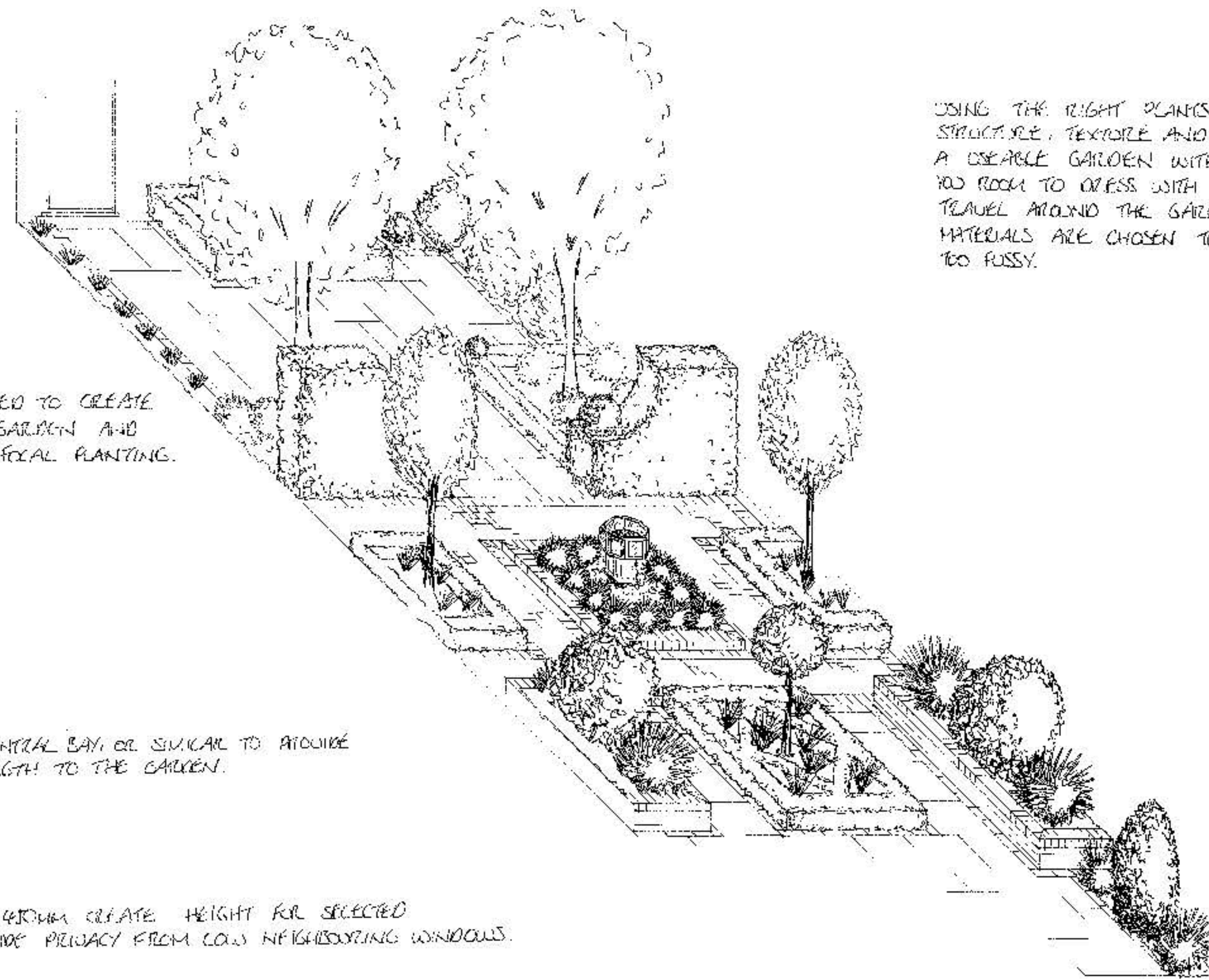
SURFACING IN THIS FIRST SECTION COULD BE STONE PAVING EDGED BY BRICKS TO CREATE A COASTYARD FEEL. THIS LEADS YOU VIA TWO PATHS TO THE CENTRAL FEATURE, BEING THE FONT AND A CHANGE OF SURFACE.



CLAYED TARKS IS USED TO CREATE ROOMS WITHIN THE GARDEN AND ENHANCE THE END FOCAL PLANTING.

SIX PARTIÈRE WITH CENTRAL BAY, OR SIMILAR TO PROVIDE FORMALITY AND STRENGTH TO THE GARDEN.

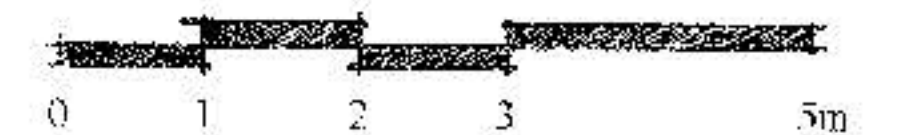
RAISED PLANTERS AT EDGES CREATE HEIGHT FOR SELECTED PLANTING AND PROVIDE PRIVACY FROM LOW NEIGHBOURING WINDOWS.



USING THE RIGHT PLANTS HERE WILL CREATE A GARDEN WITH PRIVACY, STRUCTURE, TEXTURE AND COLOUR. A USEABLE GARDEN WITH A STYLE TO ENHANCE THE HOUSE AND GIVE YOU ROOM TO EXPRESS WITH YOUR EXISTING URNS AND STATUARY. TRAVEL AROUND THE GARDEN IS ENCOURAGED WITH THE USE OF PATHS. MATERIALS ARE CHOSEN TO PROVIDE ENOUGH INTEREST, WITHOUT BEING TOO FUSSY.



0203 257311  
01753 800000  
www.astek.co.uk



Scale 1:50 @ A1